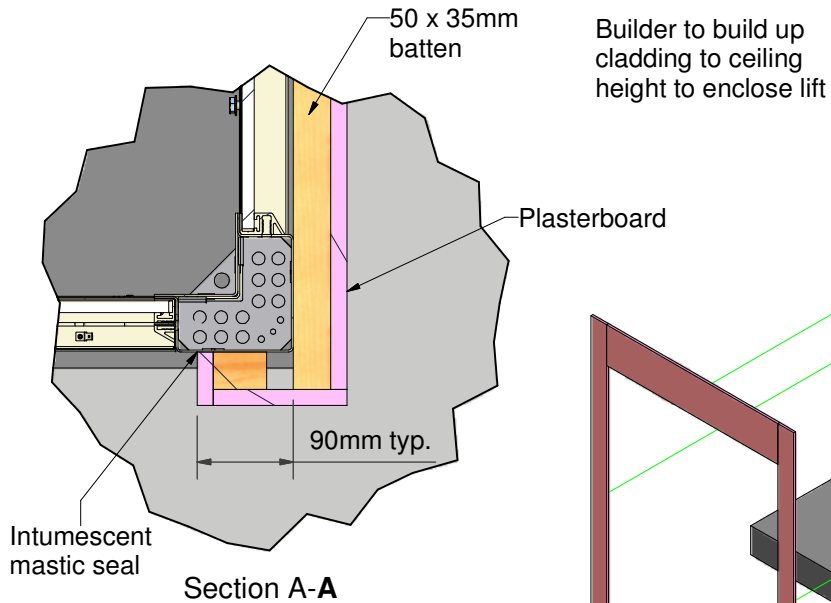


Midilift XLplus

Cladding details



Notes:

1. Steel framework to be supplied pre-drilled for batten fixing.
2. Builder to supply and fit 50 x 35mm timber battens using fixings supplied.
3. Plasterboard cladding thickness to be dependant on fire rating required.
4. All plasterboard cladding/mastic shall be supplied and fitted by builder.
5. Doors supplied unfinished.

Remote call stations:

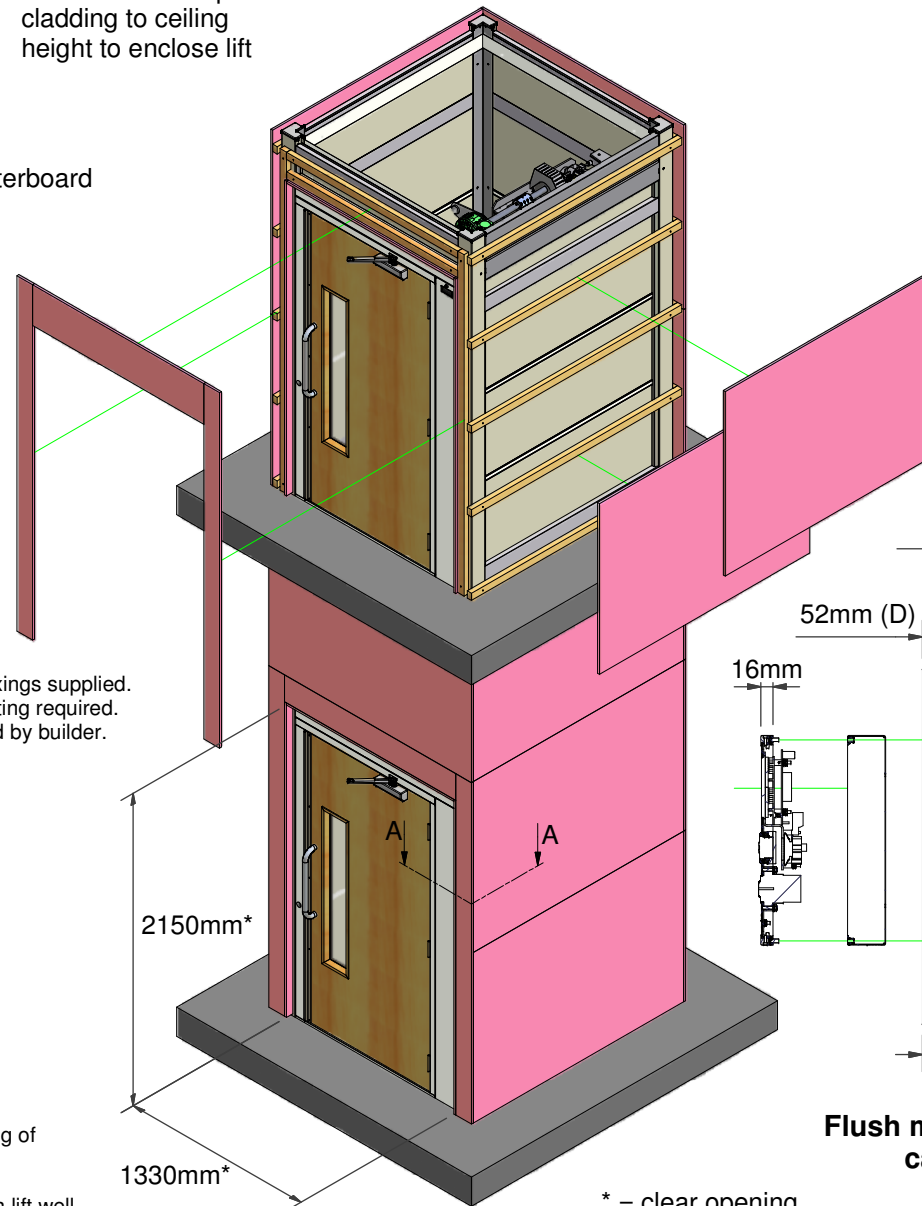
Customer to advise of preferred location of landing call units.

Note that position of landing call units should be chosen such that they are:

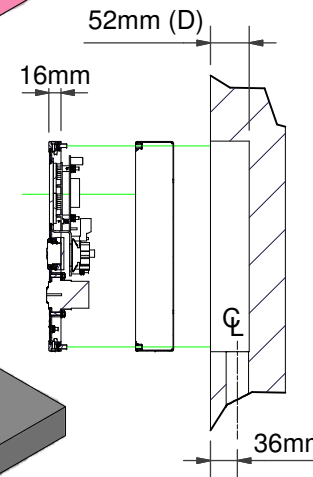
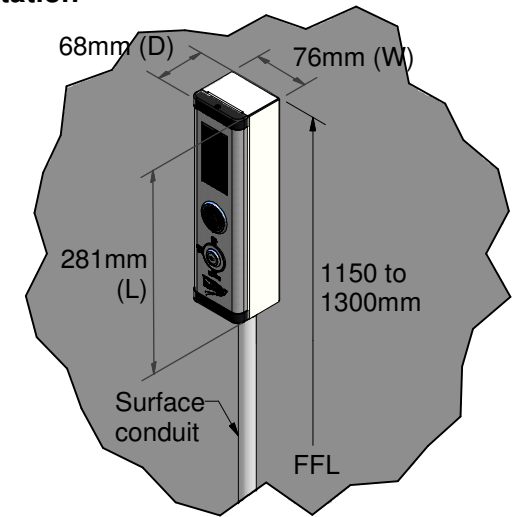
- to slam side of door
- at height of between 1150 to 1300mm above FFL
- easily accessible for lone user i.e. that user in a wheelchair can press call then pull door open without it being obstructed by position of wheelchair i.e. call unit is at least 500mm from any return wall (Part M).

If flush mounted, an aperture at each level is required for fitting of landing call station (by customer).

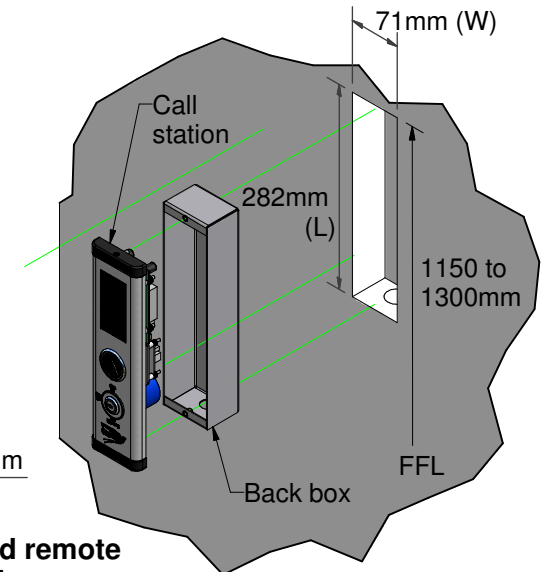
A 30 dia. conduit complete with draw wire is required between lift well & landing call position. Achievement of correct cut-out size is critical in order that when fitted, bezel plate will cover exposed edges. Please contact your dealer to arrange for back box to be sent prior to lift installation to allow for fitting & finishing (by customer).



Surface mounted remote call station



Flush mounted remote call station



Waiver
The data sheet is for guidance only & must not be used for proper working drawings. Please contact your dealer for particular details before proceeding. Owing to our policy of continual improvement, we reserve the right to alter specifications & dimensions without prior notice.